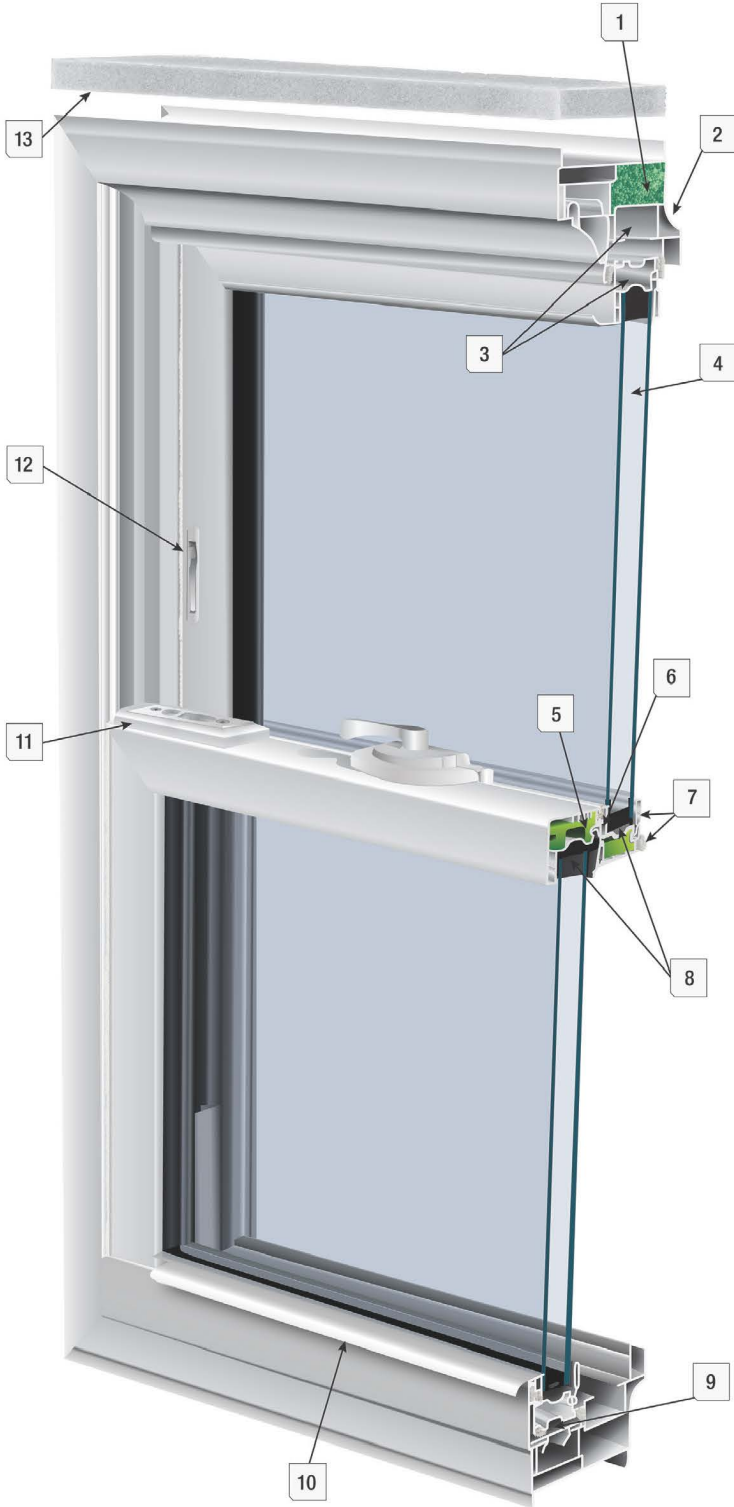


2900 SERIES

Replacement Double Hung

DOUBLE HUNG | HORIZONTAL SLIDER
FIXED PICTURE | SPECIALTY SHAPES

The 2900 Series is known for its beauty, design performance, and highest quality. The custom design features make it a great choice for replacement projects when looking for the highest energy efficiency.



FEATURES

- 1 Foam-Filled Frame Available
- 2 Beveled Exterior Main-Frame
- 3 Multi-Chambered Sashes and Main-Frame
- 4 7/8" Insulated Double Strength Glass Unit
- 5 Reinforced Innergy™ Rigid Thermal Interlock System Available
- 6 Fully Extruded Interlock at Sash Locking Rail
- 7 Multi-Point Double Barrier-Fin Weather Stripping System Along Sashes and Main-Frame
- 8 Quanex Building Products Most Advanced Warm Edge Spacer Duralite®
- 9 Engineered Pocket Sill Design
- 10 Fully Extruded Lift Rail
- 11 E-Z Tilt™ Sash Design
- 12 Twin Vent Stops
- 13 Insulated Foam Wrap
- 14 Triple-Pane Glass Options Available

STANDARD

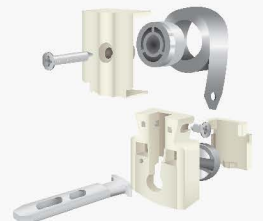
- Sunshield® Virgin Vinyl with Titanium Alloy Compound
- Main-Frame Jamb Depth Dimension of 3¼"
- Full Screen Standard, Half Screen is Available
- Head and Sill Expanders
- Patented Fusion Welded Frame and Sashes
- Constant Force Balance System

NFRC TEST RATINGS

MODEL	U-FACTOR	SHGC
2500 PW	.28	.26
2545 DS	.28	.25
2945 DH	.29	.25

**Ratings supplied with DS CS 36/Duralite®/Argon/Grids

Constant Force Balance System



Available Colors

